

规格书

Specification Document

客户名称: _____

CUSTOMER: _____

品 名: _____ CA55 型片状固体电解质钽电容器 (聚合物) _____

PARTNAME: _____ CA55 type solid electrolyte tantalum capacitor (polymer) _____

规 格: _____

SPECIFICATION: _____

版 本 号: _____ HUA2012—03 _____

VERSION: _____ HUA2012—03 _____

日 期: _____ 2025-9-27 _____

DATE : _____ 2025-9-27 _____

制造			客户		
APPROVAL			APPROVAL		
拟制 Draft by	审核 Checked by	确认 Approve by	检验 Check by	审核 Checked by	批准 Approval by

目 录 CATALOG

(请仔细阅读目录带“★”的内容, 如有疑问, 请电话咨询, 谢谢)

Please read the contents marked with "★" in the table of contents carefully. If you have any questions, please call us. Thank you.

1.选型和应用须知 Selection & application	1
1.1 使用电压 Load voltage	1
1.2 温度降额 Temperature derating	1
1.3 保护电阻 Protection resistance	1
1.4 反向电压 Reverse voltage	1
1.5 耐受纹波电压能力 Ability to withstand ripple voltage	2
1.6 耐受纹波电流能力 Ability to withstand ripple current	2
1.7 电路冗余设计建议 Suggestions on circuit redundancy design	2
1.8 储存 Store	3
1.9 焊接条件 Welding	3
2.适用范围 Scope	5
3.应用范围 Application scope	5
4.测试条件 Test condition	5
5.注意事项 Notices	5
6.参数特性 Characteristics	5
7.电性能参数变化曲线 Electrical characteristics	6
8.产品编码 Product coding	7
9.标识 Marking	7
10.壳号与尺寸 Case code & Size	7
11.可靠性试验项目 Reliability test items	8
12.额定电压、外壳代号等对应表 Comparison table(Voltage、Capacitance、Case code)	9
13.编带与包装 Taping & Packing	9
14.使用寿命 Life	10

1.选型和应用须知 Selection & application:

1.1 使用电压 Load voltage:

产品型号 Product model	阴极主要材质 Main materials of cathode	降额后的负载使用要求 Load requirements after derating	说明 Explain
CA55	PEDOT	$\leq 80\%U_R$	一般滤波电路 General filter circuit
		$\leq 50\%U_R$	大功率脉冲型充放电电路 High power pulse charge discharge circuit

注: U_R 为温度 $\leq 85^\circ\text{C}$ 条件下的额定电压, 当温度 $> 85^\circ\text{C}$ 时需考虑温度降额。

Note: U_R is the rated voltage under the condition of temperature $\leq 85^\circ\text{C}$. When the temperature is higher than 85°C , temperature derating should be considered.

1.2 温度降额 Temperature derating:

温度范围 Temperature range	降额计算公式 Derating calculation formula	说明 Explain	
$85^\circ\text{C} \sim 125^\circ\text{C}$	$U_T = (U_R - U_C) * (T - 85) / 40$	U_R	为温度 $\leq 85^\circ\text{C}$ 条件下的额定电压 It is the rated voltage under the condition of temperature $\leq 85^\circ\text{C}$
		U_C	为温度 $= 125^\circ\text{C}$ 条件下的额定电压 It is the rated voltage at 125°C
		U_T	为 $85^\circ\text{C} \sim 125^\circ\text{C}$ 区间须减少的电压 It is the voltage to be reduced between 85°C and 125°C

1.3 保护电阻 Protection resistance:

过程状态类别 Process status category	过程状态描述 Process state description	要求与说明 Requirements and instructions
产品测试过程 Product testing process	稳态漏电流测试、耐压测试 Steady state leakage current test and withstand voltage test.	电源正极至电容器之间需串联 $1\text{K}\Omega$ 的电阻 A $1\text{K}\Omega$ resistor should be connected in series between the positive pole of the power supply and the capacitor.
开关电源电路应用过程 Application process of switching power supply circuit.	有瞬间电流通过 There is an instantaneous current passing through.	至少串联 $3\Omega/\text{V}$ 的电阻 Resistance of at least $3\Omega/\text{V}$ in series.

1.4 反向电压 Reverse voltage:

环境温度 Ambient temperature	允许最大反向电压 Maximum allowable reverse voltage	
25°C	$10\%U_R$ or 1V , 取小者	$10\%U_R$ or 1V , whichever is smaller
85°C	$5\%U_R$ or 0.5V , 取小者	$5\%U_R$ or 0.5V , whichever is smaller
125°C	$1\%U_R$ or 0.1V , 取小者	$1\%U_R$ or 0.1V , whichever is smaller

1.4.1 钽电容器为极性电容, 禁止施加反向电压;
Tantalum capacitors are polar capacitors. Reverse voltage is forbidden;

1.4.2 如不可避免存在反向电压, 施加的时间必须尽可能短, 并且不能超过表内对应的电压值;
If reverse voltage is unavoidable, the applied time must be as short as possible, and should not exceed the corresponding voltage value in the table

1.4.3 即使反向电压与温度符合表内要求, 钽电容器也不能连续承受反向电压。
Even if the reverse voltage and temperature meet the requirements in the table, tantalum capacitors can not withstand the reverse voltage continuously

1.5 耐受纹波电压能力 Ability to withstand ripple voltage:

计算公式 Formula	说明 Explain	注意事项 Notices
$E = Z \cdot I$	<p>E: 纹波电压 Ripple voltage</p> <p>Z: 具体频率下的阻抗 Impedance at specific frequency</p> <p>I: 纹波电流 Ripple current</p>	<p>1、电容器中 ESR 的功率损耗不超过适当的值。 The power loss of ESR in capacitor does not exceed the appropriate value.</p> <p>2、直流电压和波纹电压的峰值之和不超过额定电压。 The sum of the peak values of DC voltage and ripple voltage shall not exceed the rated voltage.</p> <p>3、直流电压和波纹电压的负峰值之和不超过允许的反向电压。 The sum of negative peaks of DC voltage and ripple voltage shall not exceed the allowable reverse voltage.</p>

1.6 耐受纹波电流能力 Ability to withstand ripple current:

计算公式 Formula	$I = \sqrt{\frac{P}{ESR}} \times K \times F$	<p>其中: I为可承受的最大纹波电流 (A), P为功率损耗 (mW), ESR为等效串联电阻 (mΩ), K 为温度降额系数, F为频率降额系数。 I is the maximum tolerable ripple current (A), P is the power loss (mW), ESR is the equivalent series resistance (mΩ), K is the temperature derating factor, and F is the frequency derating factor.</p>
说明 Explain	<p>在电容器上施加波纹电流, 会在电容器内部产生焦耳热 (功率损耗), 影响电容器的可靠性。 可按上述公式计算钽电容可耐受的最大波纹电流(A_{rms})。</p> <p>If ripple current is applied to the capacitor, Joule heat (power loss) will be generated inside the capacitor, which will affect the reliability of the capacitor. The maximum allowable ripple current (arms) of tantalum capacitor can be calculated according to the above formula.</p>	

温度 Temperature	25℃	85℃	125℃
降额因子 K Derating factor	1.0	0.9	0.4

频率 Frequency	10KHz	100 KHz	500KHz	1MHz
降额因子 F Derating factor	0.80	1.00	1.15	1.20

壳号 Case code	尺寸 Size 公制代码 Metric code	功率耗损 P Power dissipation @+25℃ (mW)
		CA55 型 Series
A	3216-16(±0.20)	100
B	3528-19(±0.20)	125
C	6032-25(±0.30)	175
H	7343-19(±0.30)	185
F	7361-19(±0.30)	200
D	7343-28(±0.30)	225
E	7343-43(±0.30)	250
V	7361-36(±0.30)	360

1.7 电路冗余设计建议 Suggestions on circuit redundancy design:

1.7.1 失效模式 Failure mode:

CA55 型导电聚合物钽电容器在大电流通过时会发热, 并可能导致块体开裂、失效。这取决于超流情况、时间和其它被动因素影响, 电路设计时留足冗余, 可确保钽电容器的高可靠性。

CA55 conductive polymer tantalum capacitor will generate heat when high current passes through, which may lead to cracking and failure of the capacitor. This depends on the over-current situation, time and other passive factors. Enough redundancy in the circuit design can ensure the high reliability of tantalum capacitor.

1.7.2 被动因素隐患 Hidden danger of passive factors:

虽然钽电容器绝大多数失效都是被动因素引起的，也不能轻视安全隐患。电容失效会造成使用该电容的设备故障风险上涨，所以电路设计时需要考虑常见电容失效模式下电路仍能正常工作的失效保护设计。常见失效模式有漏电流上涨或短路，其他的失效模式有容量衰减、损耗或阻抗上涨或开路等。超出数据表额定值使用为不安全使用。

Although the vast majority of failures of tantalum capacitors are caused by passive factors, safety hidden danger can not be ignored. Capacitor failure will increase the risk of equipment failure using the capacitor, so it is necessary to consider the failure protection design that the circuit can still work normally under the common capacitor failure mode in circuit design. Common failure modes are leakage current rise or short circuit, other failure modes are capacity attenuation, loss or impedance rise or open circuit. It is unsafe to use beyond the rated value of the data sheet.

1.8 储存 Store:

1.8.1 环境要求 Environmental requirements:

推荐真空储存，如采取非真空方式储存，需注意温度 10~30℃，湿度≤60%RH，无酸碱等腐蚀气体。

Vacuum storage is recommended. If non vacuum storage is adopted, attention should be paid to the temperature of 10 ~ 30 °C, humidity ≤ 60% RH, no acid, alkali and other corrosive gases.

1.8.2 储存要求 Storage requirements:

拆封真空密封袋后的电容器暴露在空气中待焊接的时间≤48h Max（CA55 型产品防止产品吸潮）。

The time for the capacitor to be welded after unpacking the vacuum sealing bag is less than or equal to 48h max (CA55 products prevent moisture absorption).

1.8.3 产品吸潮处理 Product moisture absorption treatment:

如非真空贮存期超一年，建议先对电容器进行烘干处理（125℃ Max/ 4h Min），测试合格后再行焊接。如贵司无合适设备对产品进行烘烤，可电话联系我司协助处理。

If the non vacuum storage period exceeds one year, it is recommended to dry the capacitor (125 °C Max / 4h Min) first, and then weld it after passing the test. If you don't have the right equipment to bake the products, you can contact us by telephone for assistance.

1.9 焊接条件 Welding:

1.9.1 推荐焊接条件 Recommended welding conditions:

推荐采用回流焊 SMT 贴装建议，不建议使用波峰焊、手工焊。

Reflow soldering SMT mounting is recommended, but wave soldering and manual soldering are not recommended.

1.9.1.1 回流焊接 Reflow soldering:

SMT 峰值设定温度 T_p 需≤250℃，在 T_p 峰值温度 0℃~5℃范围内的保持时间需≤5s 内。

The peak setting temperature T_P of SMT should be ≤ 250 °C, and the holding time within the range of 0 °C ~ - 5 °C of the peak temperature T_P should be ≤ 5s.

1.9.1.2 手工焊接 Manual welding:

如特殊情况下需手工焊，电烙铁的功率需≤25W，温度需<300℃，焊接时间需<3s，禁止烙铁头直接接触产品本体，应熔化焊锡料使其与电容器引脚接触焊接。

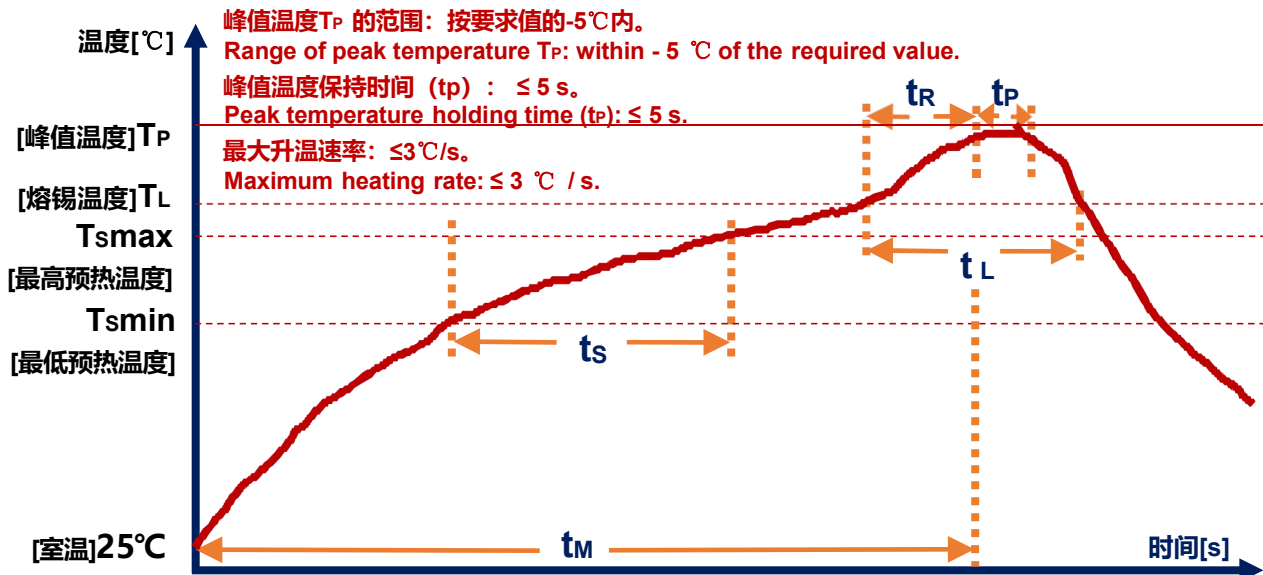
If manual welding is required under special circumstances, the power of electric iron should be ≤ 25W, the temperature should be < 300 °C, and the welding time should be < 3s. It is forbidden for the iron head to directly contact the product body, and the solder should be melted to make it contact with the capacitor pin for weldi

1.9.2 回流焊注意事项 Precautions for reflow soldering:

无铅焊接的回流焊炉温设定推荐建议，见下表：

The recommended reflow oven temperature setting for lead-free soldering is shown in the table below.

设备类型 Equipment type	8 温区 8 temperature zone		10 温区 10 temperature zone	
温区类别 Category	上温区 Upper	下温区 Lower	上温区 Upper	下温区 Lower
1 温区 zone	120℃	120℃	100℃	100℃
2 温区 zone	150℃	150℃	120℃	120℃
3 温区 zone	160℃	160℃	150℃	150℃
4 温区 zone	170℃	170℃	155℃	155℃
5 温区 zone	200℃	200℃	160℃	160℃
6 温区 zone	230℃	230℃	170℃	170℃
7 温区 zone	250℃	250℃	200℃	200℃
8 温区 zone	180℃	180℃	230℃	230℃
9 温区 zone	/	/	250℃	250℃
10 温区 zone	/	/	180℃	180℃



焊料类别 Solder type		锡铅焊料 Tin lead solder	无铅焊料 Lead free solder
T_s Min	预热最低温度 Minimum preheating temperature	100 °C	150 °C
T_s Max	预热最高温度 Maximum preheating temperature	150 °C	200 °C
t_s	预热时间 Preheating time	60~120s	60~120s
$T_L \sim T_P$	升温速率 Heating rate	$\leq 3^\circ\text{C/s}$	$\leq 3^\circ\text{C/s}$
T_L	焊膏熔点 Melting point of solder paste	183 °C	217 °C
t_L	焊膏熔化时间 Melting time of solder paste	60~150s	60~150s
T_P	峰值温度 Peak temperature	220 °C*/235 °C**	245 °C*/250 °C**
t_P	峰值温度负偏差小于 5℃ 的保持时间 Holding time of peak temperature (-5 °C ~ 0 °C)	≤ 10 s	≤ 3 s* or 5s**
$T_P \sim T_L$	降温速率 Cooling rate	$\leq 6^\circ\text{C/s}$	$\leq 6^\circ\text{C/s}$
t_m	室温 25 °C 到峰值温度时间 Time from 25 °C to peak temperature	≤ 6 min	≤ 8 min

说明：所有温度都是基于产品尺寸，测量距离 PCB 板上方 1cm 高度处的气氛温度。 “*”对应 A, B, C 壳、“**” 对应其它壳号。 Note: All temperatures are based on product size and measure the ambient temperature at 1cm height above the PCB board.

“*” corresponds to a, B, C shells and “**” corresponds to other shell numbers.

2.适用范围 Scope

本承认图适用于本公司生产的电子设备用CA55型片式导电高分子固体钽电容器，

This admit diagram is suitable for the company production of electronic equipment with flake solid electrolyte tantalum capacitor.

3.应用范围 Application scope

适用于高密度表面贴装的民用电子设备，例如：彩电、个人电脑、移动电话、摄像机、雷达等。

Most suitable for high-density surface mount consumer electronic equipment , such as colour TV sets 、PC 、mobile telephone sets 、pickup camera 、radar etc.

4.测试条件 Test condition

环境温度：25℃±5℃，相对湿度：≤80%RH。在2.0V的偏置电压下使用串联的方式，对电容器进行电容量、损耗及ESR的测量，其中ESR的测试频率为100KHz，电容量及损耗的测试频率为120Hz，使用额定电压UR对电容器充电5min进行漏电流的测量。

Ambient temperature:25℃±5℃, relative humidity :≤80% RH .The capacitance, loss and ESR of the capacitor are measured in series under 2.0V bias voltage, in which the ESR test frequency is 100kHz, the capacitance and loss test frequency is 120Hz, and the leakage current is measured when the capacitor is charged with rated voltage ur for 5min.

5.注意事项 Notices

测定及实验时，为使试验结果不至发生问题，有必要将测试后的产品充分放电。本产品为有极性元器件，测试或使用时必须严禁将正负极接反，以免性能失效。

Test and experiment, in order to make the test results not problems, it is necessary to will test the product after fully discharge.This product is a polar components, testing or when using it is strictly prohibited to will is negative pick back, in order to avoid performance failure.

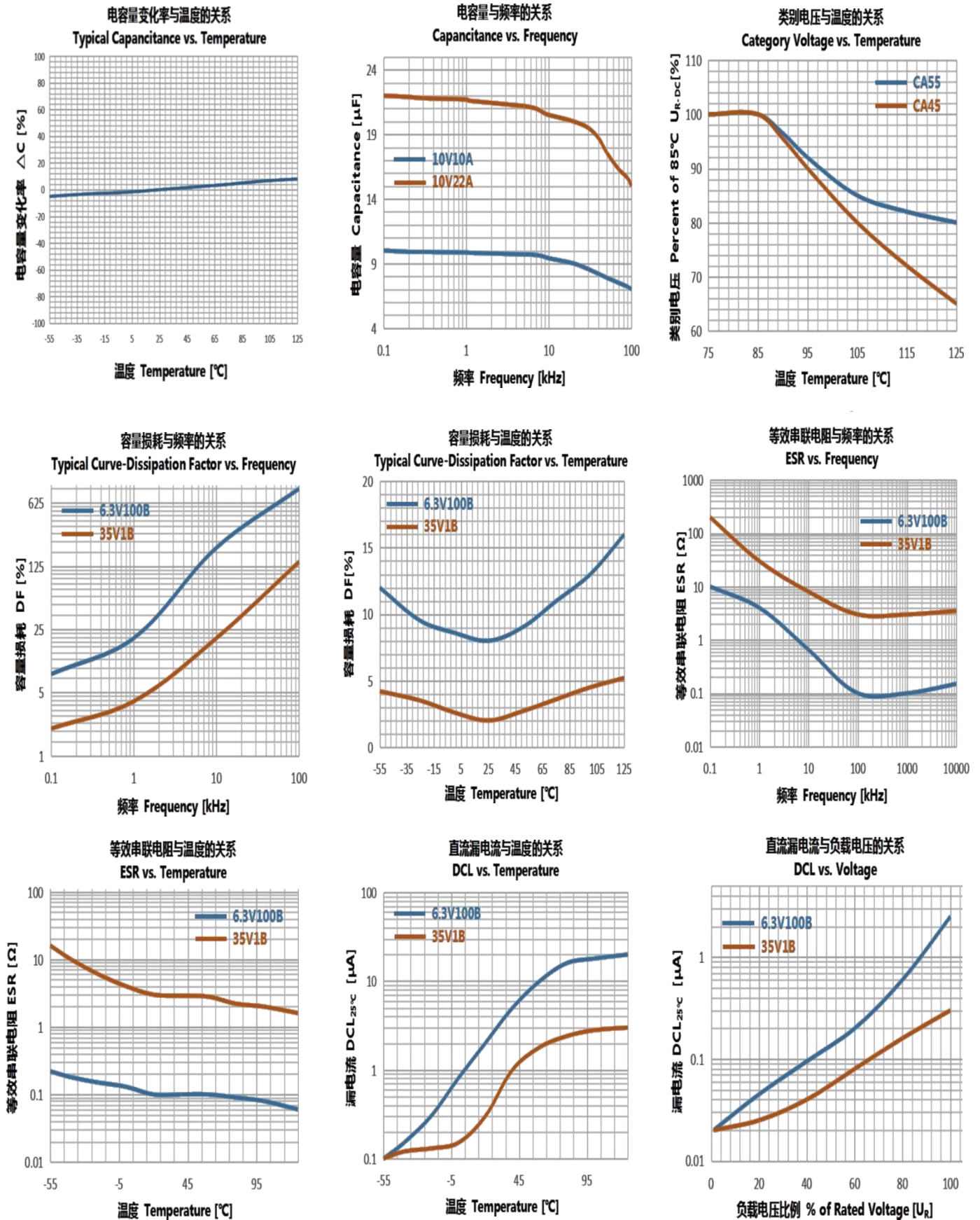
6.参数特性 Characteristics

项目 Item	特性 Characteristic							
使用温度范围 Operating Temperature Range	-55℃~+125℃							
额定电压 Rated voltage Rang	XX V _{Dc}							
漏电流 (I ₀) Leakage Current	施加额定电压 U _R 充电 5 分钟读数, I ₀ ≤0.1C _R U _R 或 5uA 取大者 Measured after 5 min application of rated voltage reading, I ₀ ≤0.1C _R U _R or 5μA whichever is greater. C _R : 标称容量 (μ F) Nominal Capacitance U _R : 额定电压 (V) Rated voltage							
	根据上述漏电流计算公式的条件, 漏电流上限值: XX μA							
纹波电流 (I _{ms})	根据 14.2.2 的纹波电流计算公式, 25℃/100KHz, 可承受纹波电流上限值: 1756mA							
额定电容量 (C _R) Capacitance	C _R (μF)			XXX±XX%			25℃±5℃ 120Hz	
损耗角正切值 (tg δ) Dissipation Factor	tgδ _{max} (%)			X				
等效串联电阻 (ESR)	ESR _{max} (mΩ)			X			25℃±5℃ 100kHz	
温度特性 Temperature characteristics	损耗角正切值(tg δ _{Max}) Dissipation Factor			容量变化率(%) Capacitance change			漏电流(I _{Max}) Leakage Current	
	-55℃	+85℃	+125℃	-55℃	+85℃	+125℃	+85℃	+125℃
	15	15	20	-10~+10	-10~+30	-10~+50	8I ₀	10I ₀

7. 电性能参数变化曲线 Electrical characteristics

同型号不同规格尺寸的电容器，其电性能变化趋势相同。

The change trend of electrical performance of capacitors with the same model and different sizes is the same.



8. 产品编码 Product coding

CA55	-	D	337	M	010	T	E050
型号	隔离符	壳号尺寸	标称容量	容量允差	额定电压	包装方式	ESR
Type	Isolation	Case	Capacitance	Capacitance tolerance	Rated voltage	Packing	The last three digits of the ESR value are in mΩ, E100=100mΩ.
				K=±10% M=±20%		T = 编带 Taping W = 盘装 Packaged	

9. 产品标识 Marking



10. 壳号与尺寸 Case code & Size

产品侧面

Product Side

负极引脚面

Anode pin surface

正极引脚面

Anode pin surface

尺寸代码	EIA 代码	EIA 公制	L	W ₁	H	S	W ₂
Case Code	EIA Code	EIA Metric					
A	1206	3216-16(±0.20)	3.35	1.74	1.80	0.70	1.20
B	1210	3528-19(±0.20)	3.68	3.00	2.08	0.70	2.20
C	2312	6032-25(±0.30)	6.20	3.40	2.65	1.30	2.20
H	2917	7343-19(±0.30)	7.48	4.45	2.15	1.30	2.40
F	2924	7361-19(±0.30)	7.55	6.27	1.90	1.40	4.00
D	2917	7343-28(±0.30)	7.45	4.45	3.00	1.30	2.40
E	2917	7343-43(±0.30)	7.40	4.40	4.58	1.30	2.40
V	2924	7361-36(±0.30)	7.50	6.20	3.80	1.40	3.00

产品底面

bottom

11.产品可靠性试验的内容以及 FIT 值 Reliability test content and FIT value

序号 NO.	检验项目 Item	技术要求 technical requirements	测试项目 test item	测试标准 testing standard
1	耐焊接热 Resistance to Soldering Heat	按GJB 360B-2009, 方法 210 进行试验: 焊接温度: 260℃; 持续时间: 5s*2; 恢复时间: >3h。 The test shall be conducted in accordance with Method 210 of GJB 360B-2009. Soldering Temperature: 260 ± 5 ° C Duration: 5 seconds for each of two soldering operations. Recovery Time: More than 3 hours.	电容量变化 Capacitance Change 损耗角正切 tan δ 等效串联电阻 ESR 直流漏电流 DC Leakage Current 外观检查 Visual Inspection	变化量应在初始测量值的±10%范围内。 The variation shall be within ±10% of the initial measured value. 在标准值范围内。 Shall be within the specified limit. 应在标准值的 200%范围内。 Shall be within 200% of the specified limit. 应在标准值的 200%范围内。 Shall be within 200% of the specified limit. 无明显变化。 No visible physical damage.
2	加速寿命 Accelerated Life Test	按GJB2283A-2014 中3.21 条及GJB360B-2009 中方法 108 规定进行试验。 试验温度: 125 ^{±4} ℃; 试验方式: 逐渐(不超过 5min)施加 0.8UR; 试验时长: 2000h; 负载要求: 电源内阻不超过 3Ω, 电源短路时 至少提供 1A 的电流; 测试要求: 每隔 96h、500h、1000h、2000h 将 产品取出, 在检验环境下静置 6h 后, 测量 电 性能并记录, 记录失效产品序号的最终失效 时长, 然后将合格品继续按试验条件进行寿命 试验。 The test shall be conducted in accordance with Clause 3.21 of GJB 2283A-2014 and Method 108 of GJB 360B-2009. Test Temperature: 125°C Test Method: Gradually apply a voltage of 0.8 UR (rated voltage). The voltage ramp-up duration shall not exceed 5 minutes. Test Duration: 2000 hours Load Requirements: The power supply internal resistance shall not exceed 3 Ω, and the supply must be capable of providing at least 1 A of current under short-circuit conditions. Test Procedure: At intervals of 96 h, 500 h, 1000 h, and 2000 h, the units under test (UUTs) shall be removed. After stabilizing for 6 hours under inspection environment conditions, their electrical characteristics shall be measured and recorded. The final failure time for any failed units shall be documented. Units that remain compliant shall continue the life test under the specified conditions.	电容量变化 Capacitance Change 损耗角正切 tan δ 等效串联电阻 ESR 直流漏电流 DC Leakage Current	变化量应在初始测量值的±30%范围内。 The variation shall be within ±30% of the initial measured value. 应在标准值的 200%范围内。 Shall be within 200% of the specified limit. 应在标准值的 200%范围内。 Shall be within 200% of the specified limit. 应在标准值的 300%范围内。 Shall be within 300% of the specified limit.
3	可焊性 Solderability	按 GJB 360B-2009, 方法 208 进行试验: 焊接温度: 245℃±2℃; 浸渍时间: 5s; 焊锡: Sn/3.0Ag/0.5Cu。 The test shall be conducted in accordance with Method 208 of GJB 360B-2009. Soldering Temperature: 245℃ ± 2℃. Immersion Time: 5 seconds. Solder Alloy: Sn/3.0Ag/0.5Cu.	外观检查 Visual Inspection	元件端电极焊锡覆盖率大于 95%。 The solder coverage on the component terminations shall be greater than 95%.
4	振动 Vibration Test	按 GJB 360B-2009, 方法 201 进行试验: 频率: 10-55hz(每个循环 20 分钟); 全振幅: 1.5mm; 方向与时间: X,Y,Z 方向各 2 小时(共 6 小时) The test shall be conducted in accordance with Method 201 of GJB 360B-2009. Frequency: 10 Hz to 55 Hz (20 minutes per sweep cycle) Peak Amplitude: 1.5 mm Direction and Duration: 2 hours along each of the three mutually perpendicular axes (X, Y, Z), for a total test duration of 6 hours.	电容量变化 Capacitance Change 损耗角正切 tan δ 等效串联电阻 ESR 直流漏电流 DC Leakage Current 外观检查 Visual Inspection	变化量应在初始测量值的±10%范围内。 The variation shall be within ±10% of the initial measured value. 在标准值范围内。 Shall be within the specified limit. 应在标准值的 150%范围内。 Shall be within 150% of the specified limit. 应在标准值的 300%范围内。 Shall be within 300% of the specified limit. 无明显变化。 No visible physical damage.

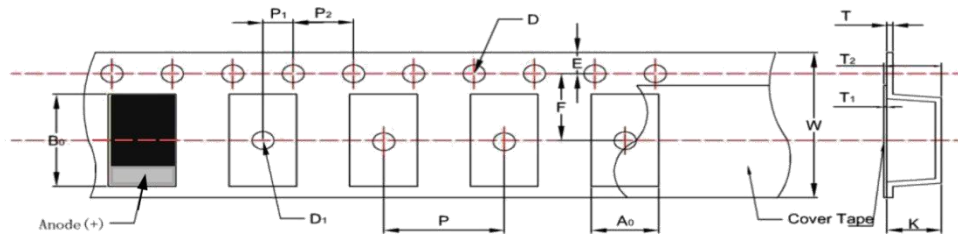
序号 NO.	检验项目 Item	技术要求 technical requirements	测试项目 test item	测试标准 testing standard
5	大电流充放电 High-current charging and discharging	参照客户特殊需求与 GJB360B-2009, 方法 312 进行: 额定电压 , 加电 5s, 放电 5s, 10A, 10000 次。 The test shall be performed with reference to specific customer requirements and Method 312 of GJB 360B-2009. Procedure: Apply the rated voltage for 5 seconds, followed by a discharge for 5 seconds, at a current of 10 A. This constitutes one cycle. Repeat for a total of 10,000 cycles.	电容量变化 Capacitance Change 损耗角正切 $\tan \delta$ 等效串联电阻 ESR 直流漏电流 DC Leakage Current 外观检查 Visual Inspection	变化量应在初始测量值的 $\pm 20\%$ 范围内。 The variation shall be within $\pm 20\%$ of the initial measured value. 在标准值范围内。 Shall be within the specified limit. 应在标准值的 200% 范围内。 Shall be within 200% of the specified limit. 应在标准值的 300% 范围内。 Shall be within 300% of the specified limit. 应无瞬时、永久性短路现象。 No transient or permanent short-circuit phenomena shall occur.
6	湿热试验 Damp Heat Test	按 GJB 2283-2014 的 4.5.15 的试验条件进行试验, 试验条件如下: ; 预处理: 样品应在 $50^{\circ}\text{C} \pm 2^{\circ}\text{C}$ 、不控制相对湿度的条件下放置 24h; 试验条件: 85°C 、85%RH、1000h; 恢复时间: 在检验环境下, 静置 24h 后进行测试检查; The test shall be conducted in accordance with the test conditions specified in Clause 4.5.15 of GJB 2283-2014. The detailed conditions are as follows: Pre-conditioning: The samples shall be placed at $50^{\circ}\text{C} \pm 2^{\circ}\text{C}$ without controlling relative humidity for 24 hours. Test Conditions: 85°C , 85% Relative Humidity, for 1000 hours. Recovery: The samples shall be allowed to stabilize for 24 hours under the inspection environment conditions before final measurements and inspection.	电容量变化 Capacitance Change 损耗角正切 $\tan \delta$ 等效串联电阻 ESR 直流漏电流 DC Leakage Current 外观检查 Visual Inspection	变化量应在初始测量值的 $\pm 30\%$ 范围内。 The variation shall be within $\pm 30\%$ of the initial measured value. 应在标准值的 200% 范围内。 Shall be within 200% of the specified limit. 应在标准值的 200% 范围内。 Shall be within 200% of the specified limit. 应在标准值的 300% 范围内。 Shall be within 300% of the specified limit. 应无有害腐蚀、标志模糊、瞬时短路或永久性短路现象。 The unit shall be free from harmful corrosion, blurred markings, transient short-circuit, or permanent short-circuit phenomena.
7	温度冲击 Thermal Shock Test	按 GJB 2283-2014 的 3.15.2 条件进行测试, 步骤如下: 过程温度: 低温 -55°C 、高温 $+125^{\circ}\text{C}$; 高低温保温时间: 各 15min; 高低温转换时间: 不超过 2min; 循环次数: 100 次; 恢复时间: 在检验环境下, 静置 16h; The test shall be conducted in accordance with the conditions specified in Clause 3.15.2 of GJB 2283-2014. The procedure is as follows: Temperature Extremes: Low temperature: -55°C , High temperature: $+125^{\circ}\text{C}$ Dwell Time: 15 minutes at each temperature extreme. Transition Time: Not to exceed 2 minutes. Number of Cycles: 100 cycles. Recovery: The samples shall be allowed to stabilize for 16 hours under the inspection environment conditions before final measurements.	电容量变化 Capacitance Change 损耗角正切 $\tan \delta$ 等效串联电阻 ESR 直流漏电流 DC Leakage Current 外观检查 Visual Inspection	变化量应在初始测量值的 $\pm 10\%$ 范围内。 The variation shall be within $\pm 10\%$ of the initial measured value. 在标准值范围内。 Shall be within the specified limit. 应在标准值的 200% 范围内。 Shall be within 200% of the specified limit. 应在标准值的 150% 范围内。 Shall be within 150% of the specified limit. 应无瞬时短路或永久性短路现象。 The unit shall be free from transient or permanent short-circuit phenomena.
8	浪涌 Surge Test	按 JIS C5101-3-1998 的条件进行试验, 要求如下: 环境温度: 85°C ; 充电电压: 1.15UR; 充电时间: 30 秒; 空载持续时间: 5 分半; 循环次数: 1000 次。 The test shall be conducted in accordance with the conditions specified in JIS C5101-3-1998. The requirements are as follows: Ambient Temperature: 85°C Charging Voltage: 1.15 UR (Rated Voltage) Charging Time: 30 seconds No-Load Duration: 5 minutes and 30 seconds Number of Cycles: 1000 cycles	电容量变化 Capacitance Change 损耗角正切 $\tan \delta$ 等效串联电阻 ESR 直流漏电流 DC Leakage Current 外观检查 Visual Inspection	变化量应在初始测量值的 $\pm 10\%$ 范围内。 The variation shall be within $\pm 10\%$ of the initial measured value. 在标准值范围内。 Shall be within the specified limit. 在标准值范围内。 Shall be within the specified limit. 在标准值范围内。 Shall be within the specified limit. 应无瞬时短路或永久性短路现象。 The unit shall be free from transient or permanent short-circuit phenomena.

12. 电压、电容量、外壳代号对应表 Comparison table (Voltage、Capacitance、Case code)

额定电压(V)	2.5	4	6.3	10	16	20	25	35	50
电压代码	F	G	J	A	C	D	E	V	T
类别电压(V)	2.1	3.4	5.3	8.5	11	14	17	21	30
浪涌电压(V)≤85℃	3.0	4.6	7.2	11	18	23	29	40	57
浪涌电压(V) ≤125℃	2.2	3.4	5	8	13	16	20	28	40
标称容量(μF)	代码	壳号							
0.68	684						B	B	B
1	105				B	B	B	B	B
1.5	155				B	B	B/C	B/C	B/C
2.2	225				B	A/B	B/C	B/C	B/C
3.3	335				A/B	A/B/C	B/C	B/C	C/D
4.7	475			A	A/B/C	B/C	B/C	B/C	C/D
6.8	685			A	A/B/C	B/C	B/C	C/D	C/H/D
10	106		A	A/B	A/B/C	B/C	B/C/D	B/C/H/D/E	D/E
15	156		A/B	A/B	A/B/C	B/C	B/C/D	B/C/H/D/E	E/V
22	226		A/B/C	A/B/C	A/B/C	B/C/D	C/H/D/E	B/C/H/D/E	D/E
33	336		A/B/C	A/B/C	B/C	C/H/D/E	C/H/D/E	H/D/E	D/E/V/F
47	476	A	A/B/C	A/B/C	B/C	C/H/D/E	C/H/D/E	D/E	E/V/F
68	686	A	A/B/C	A/B/C/D	C/H/D	H/D/E	D/E	D/E/V	
100	107	A/B	A/B/C	A/B/C/H/D	C/H/D	H/D/E	D/E/V	E/V/F	
150	157	B	B/C/H	B/C/H/D	C/H/D/E	H/D/E/V/F	E/V/F	V/F	
220	227	B/C/H/D	B/C/H/D	B/C/H/D	H/D	H/D/E/V/F	E/V/F		
330	337	B/C/H/D	C/H/D/E	H/D/E	E/V	E/V/F			
470	477	C/H/D	H/D/E	H/D/E/V/F		V/W/F			
680	687	D/E	D/E/V/F	E/F					
1000	108	D/E/V/F		V					

13. 包装 Packing

13.1 编带尺寸图表 Diagram of Taping Dimensions



单位: mm

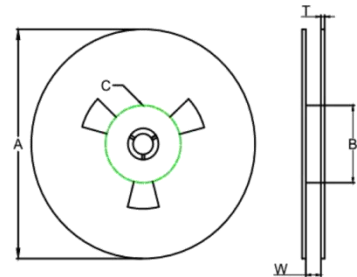
Case	A ₀ ±0.10	B ₀ ±0.10	K±0.10	W±0.30	E±0.10	F±0.05	P±0.10	P ₁ ±0.10	P ₂ ±0.10	D+0.20	D ₁ +0.25
A	1.88	3.53	1.85	8	1.75	3.5	4	4	2	1.55	1.00
B	3.07	3.80	2.22	8	1.75	3.5	4	4	2	1.55	1.10
C	3.60	6.40	2.85	12	1.75	5.5	4	8	2	1.55	1.60
H	4.60	7.60	2.16	12	1.75	5.5	4	8	2	1.55	1.55
F	6.50	7.80	2.20	12	1.75	5.5	4	8	2	1.55	1.5
D	4.60	7.60	3.10	12	1.75	5.5	4	8	2	1.55	1.55
E	4.60	7.60	4.40	12	1.75	5.5	4	8	2	1.55	1.55
V	6.40	7.60	4.40	12	1.75	5.5	4	8	2	1.55	1.55

*10 个以上定位孔孔距公差为±0.2mm

±0.2mm over 10 sprocket hole spaces

13.2 卷轮尺寸 Reel Dimensions

Reel Size	180mm (7")	180mm (7")	180mm (7")
Tape Wide	8mm	12mm	16mm
A	178±2.00	178±2.00	178±2.00
B	50 min	50 min	50 min
C	13.0±0.50	13.0±0.50	13.0±0.50
W	8.4+1.5/-0	12.4+1.5/-0	16.4+1.5/-1
T	1.50±0.50	1.50±0.50	1.50±0.50



13.3 包装数量 Packaging Quantity

壳号	Case size	A	B	C	H	F	D	E	V
数量 (只/盘)	Quantity (pcs / plate)	2000	2000	500	1000	500	500	400	400

14. 使用寿命 Life

在类别电压 U_C 和类别温度 T_C 下，电容器的平均故障率为0.5%/2000小时，符合 U_C 和 T_C 的工业试验标准。最短测试周期取决于产品寿命试验时间的长短（测试周期一般大于等于2000小时）。

当应用电压 U_A 和应用温度 T_A 低于类别电压 U_C 和类别温度 T_C 时，电容器的实际寿命比预期会增加。正常情况下，当 $U_A < 0.9 \cdot U_C$ 和 $T_A < 85^\circ\text{C}$ 时，预期寿命通常会超过大多数电子元器件的使用寿命（即寿命>10年）。

电容器在特定的应用电压与应用温度下的寿命，可以使用下面的公式进行仿真计算。失效的表现为在足够的电流条件下，1A的保险丝被熔断。计算公式是基于可靠性试验经验结果的估算，不能确保完全符合实际情况。

The average failure rate of capacitors at category voltage U_C and category temperature T_C is 0.5%/2000 h, which meets the industrial test standards of U_C and T_C . The shortest test period depends on the length of the product life test time (the test period is generally greater than or equal to 2000 hours).

when the applied voltage U_A and the applied temperature T_A lower than the category voltage U_C and the category temperature T_C , the actual life of the capacitor will increase than expected. normally, when $U_A < 0.9 \cdot U_C$ and $T_A < 85^\circ\text{C}$, life expectancy usually exceeds that of most electronic components (>10 years).

The lifetime of the capacitor at a specific application voltage and application temperature can be simulated using the following formula. The failure of the capacitor shows that the fuse of 1a is blown under sufficient current condition. The calculation formula is based on the empirical results of reliability test, which can not ensure that it is completely in line with the actual situation.

$VAF = \left(\frac{U_C}{U_A}\right)^n$		
式中 where	含义 meaning	单位 units
VAF	电压加速系数 Acceleration factor due to voltage	无 unitless
U_C	类别电压 Category voltage	伏特 volt
U_A	应用电压 Application voltage	伏特 volt
n	指数 Exponent	16

$TAF = e^{\left[\frac{E_a}{k} \left(\frac{1}{273+T_A} - \frac{1}{273+T_C}\right)\right]}$		
式中 where	含义 meaning	单位 units
TAF	温度加速系数 Acceleration factor due to temperature	无 unitless
E_a	活化能 Ctivation energy	1.4eV
k	玻尔兹曼常数 Boltzmann's constant	$8617 \times 10^6 \text{ eV/K}$
T_A	应用温度 Application temperature	$^\circ\text{C}$
T_C	类别温度 Category temperature	$^\circ\text{C}$

Life $u, r, FLife, r^*AF$		
式中 where	含义 meaning	单位 units
Life U_A, T_A	应用电压与温度所对应的寿命 Life of load voltage and temperature	年 years
Life U_C, T_C	类别电压与温度所对应的寿命 Life of category voltage and temperature	年 years
AF	加速系数 acceleration factor	无 unitless

AF = VAF大TAF		
式中 where	含义 meaning	单位 units
AF	加速系数 Acceleration factor	无 unitless
TAF	温度加速系数 Acceleration factor due to temperature	无 unitless
VAF	电压加速系数 Acceleration factor due to voltage	无 unitless

注意事项： 类别电压， U_C ：在类别温度 T_C 条件下持续负载的最大直流工作电压；
额定电压， U_R ：在额定温度 T_R 条件下持续负载的最大直流工作电压；
类别温度， T_C ：允许的最高负载温度，在 T_C 条件下需降额；
额定温度， T_R ：允许的最高负载温度，无需降额。 $T_R \leq T_C$ 。

Notes: Category voltage, U_C : Maximum DC working voltage of continuous load under category temperature T_C ;
Rated voltage, U_R : Maximum DC working voltage of continuous load at rated temperature T_R ;
Class temperature, T_C : Maximum allowable load temperature, derating is required under T_C condition;
Rated temperature, T_R : The maximum allowable load temperature without derating. $T_R \leq T_C$.